

CITY OF KELOWNA

BYLAW NO. 9382

Road Closure and Removal of Highway Dedication Bylaw **(A Portion of Badke Road at 260 Franklyn Road)**

A bylaw pursuant to Section 40 of the Community Charter to authorize the City to permanently close and remove the highway dedication of a portion of highway being a portion of Badke Road at 260 Franklyn Road

NOW THEREFORE, the Municipal Council of the City of Kelowna, in open meeting assembled, hereby enacts as follows:

1. That portion of highway attached as Schedule "A" comprising 133.0 m² shown in bold black as "Closed Road" on the Reference Plan prepared by Linden E. Fritsch, B.C.L.S. and completed on the 10th day of March, 2005, is hereby stopped up and closed to traffic and the highway dedication removed.
2. The Mayor and City Clerk of the City of Kelowna are hereby authorized to execute such conveyances, titles, survey plans, forms and other documents on behalf of the said City as may be necessary for the purposes aforesaid and to affix the Corporate Seal of the said City thereto.

Read a first, second and third time by the Municipal Council this day of , 2005

Adopted by the Municipal Council of the City of Kelowna this day of , 2005.

Mayor

Acting City Clerk

REFERENCE PLAN TO ACCOMPANY CITY OF KELOWNA BYLAW NO. 9382 , CLOSING ROAD & CANCELLING THE DEDICATION OF HIGHWAY, DEDICATED BY PLAN 12913, ALL OF SEC. 27, TP.26, ODYD. Pursuant To Section 120 Of The Land Title Act. & Section 40 Of The Community Charter.

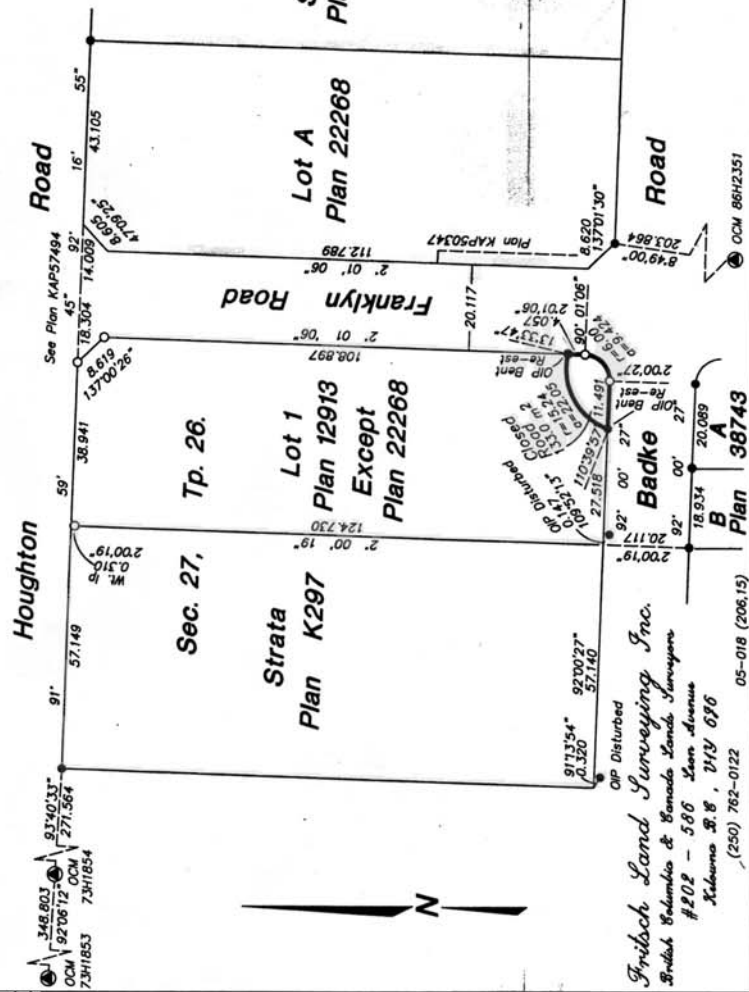
B.C.G.S 82E.083



Scale 1:1000 Metric

Book Of Reference

LEGAL DESCRIPTION	AREA
Closed Road Sec. 27, Tp. 26, Odyd.	1,33.0 m ²



PLAN KAP

Deposited in the Land Title Office at Kamloops, B.C.
 this day of 20

REGISTRAR

LEGEND:

- - Control Monument
 - - Standard Iron Post Found
 - - Standard Iron Post Set
 - WT. - Witness
- Distances shown are in metres and decimals thereof.
 Integrated Survey Area No. 4 - City Of Kelowna
 NAD83(CSRS)
 Grid Bearings are derived from observations between geodetic control monuments 73H1853 & 73H1854.
 This plan shows horizontal ground-level distances except where otherwise noted. To compute grid distances, multiply ground-level distances by combined factor 0.9999088
 This Plan Lies Within The Regional District of Central Okanagan.
 I, Linden E. Fritsch, a British Columbia Land Surveyor of the City of Kelowna, in British Columbia, certify that I was present at and personally supervised the survey represented by this plan, and that the survey and plan are a correct and true representation of the land surveyed and the survey was completed on the 9th day of March, 2005. The plan was completed, checked and the checklist filed under ECR# 28449, on the 10th day of March, 2005.

Linden E. Fritsch
 BRITISH COLUMBIA LAND SURVEYOR

Fritsch Land Surveying Inc.
 British Columbia & Canada Land Surveyors
 #202 - 5855 Glen Avenue
 Kelowna B.C., V1Y 6Y6
 (250) 782-0122 05-018 (206,15)